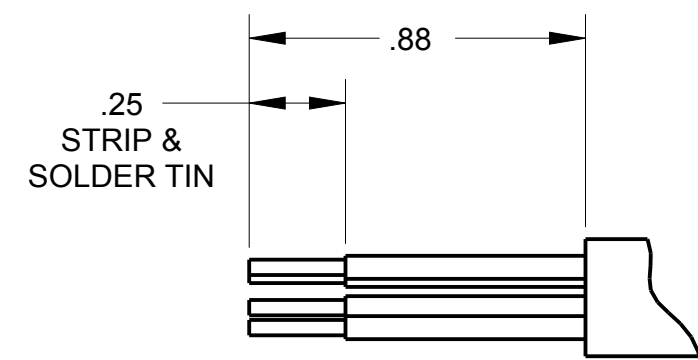
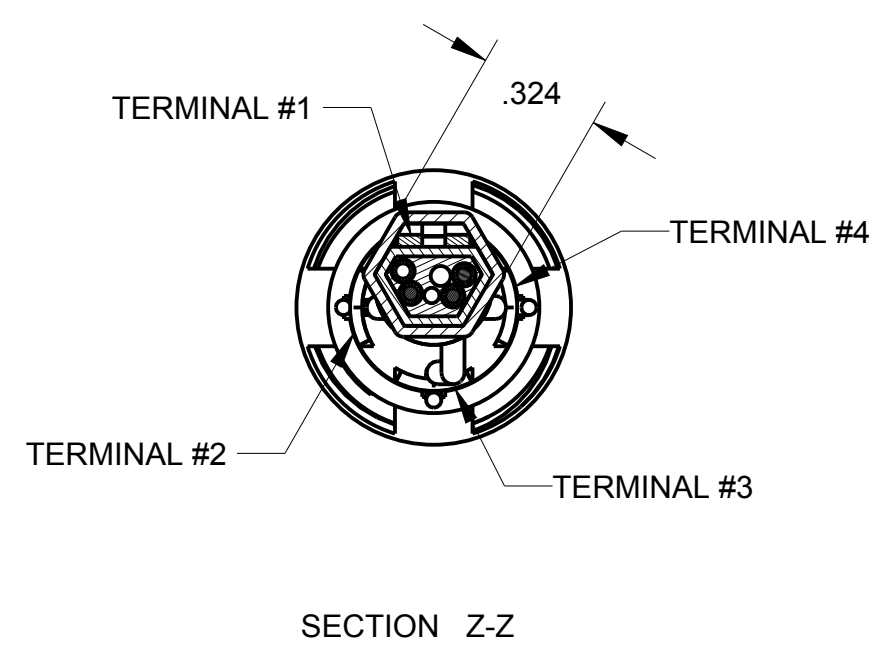
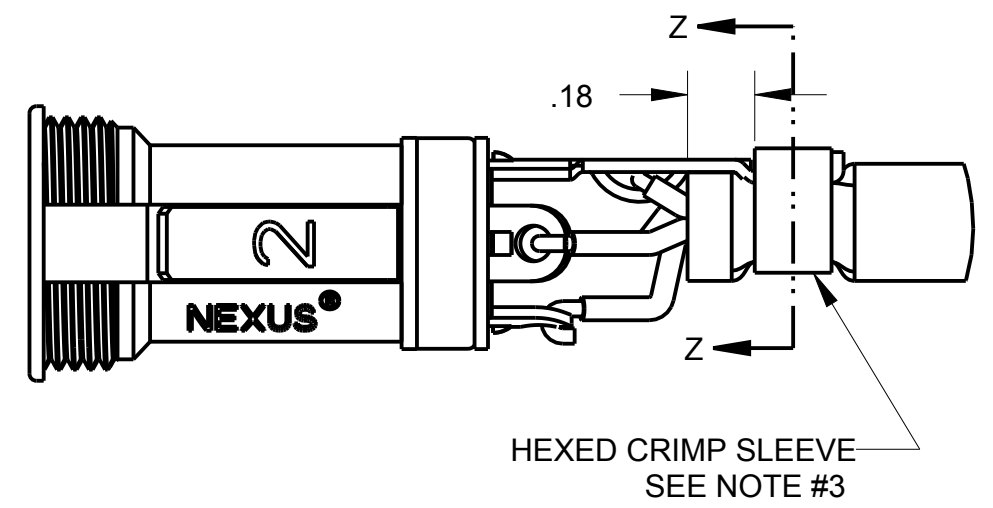
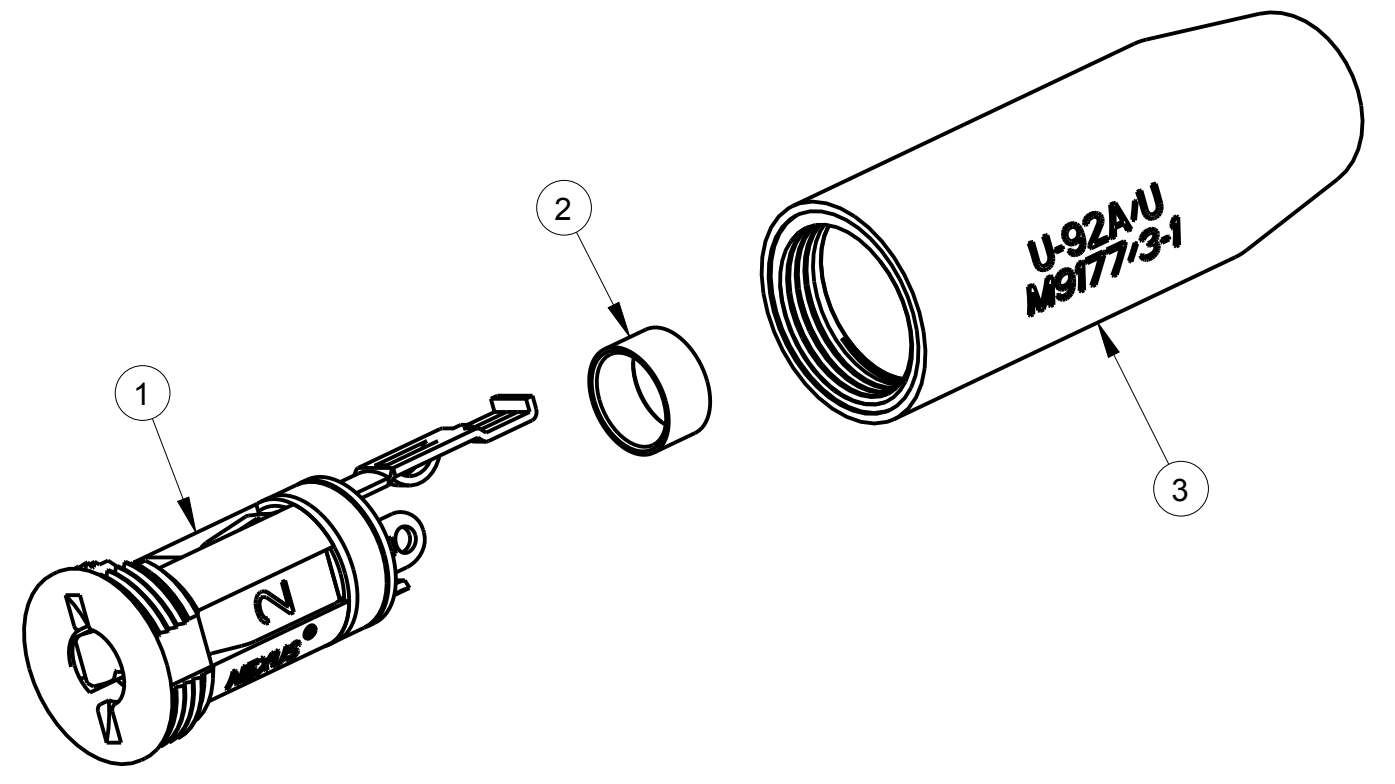
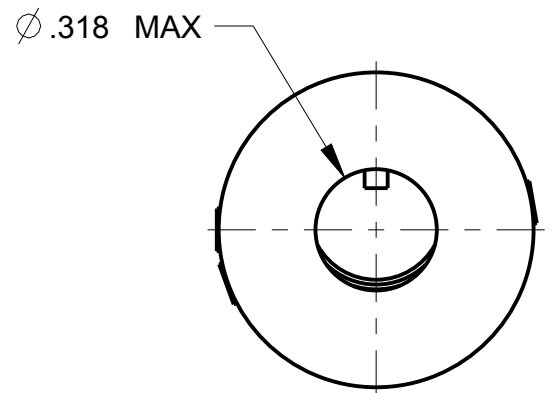
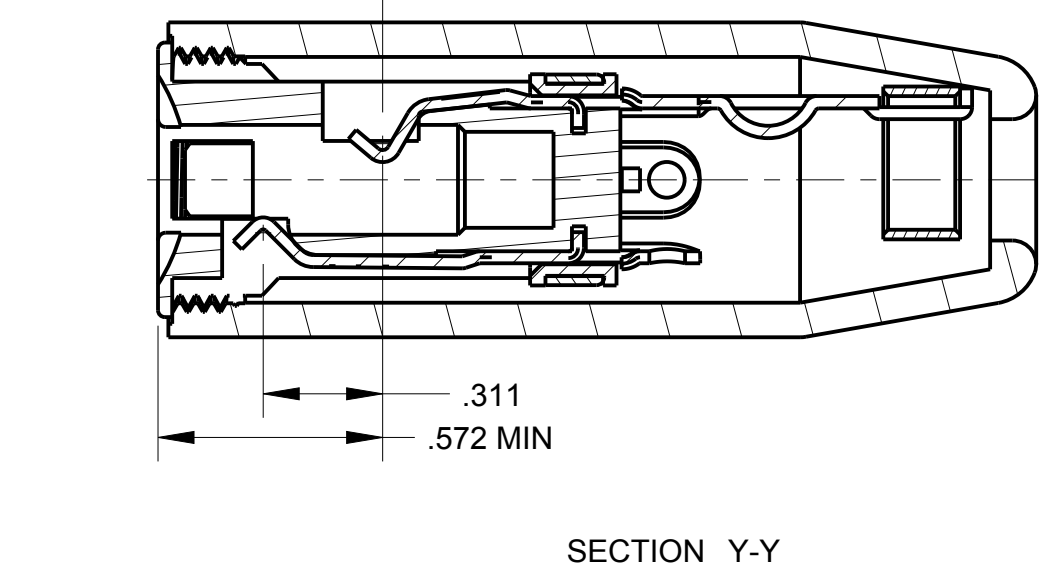
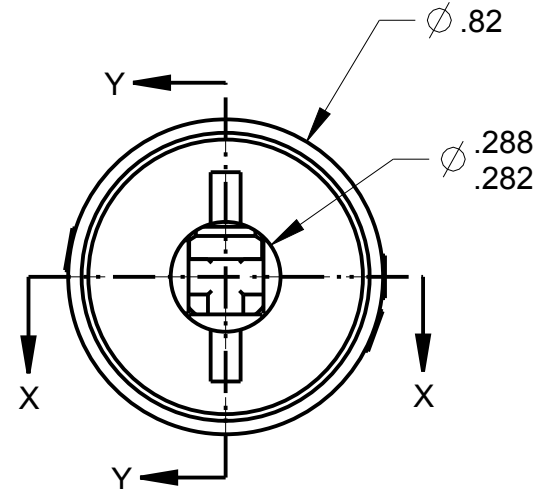
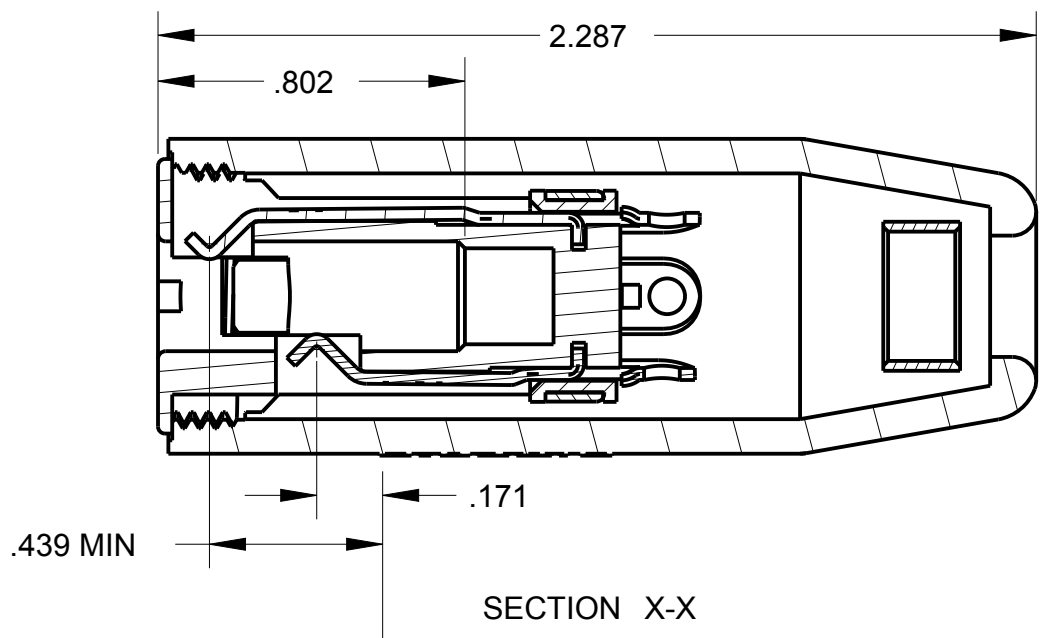


ITEM #	PART #	QTY	DESCRIPTION
1	TJ-102-9	1	JACK ASSEMBLY
2	TP-102-20	1	CRIMP SLEEVE
3	TJ-102-6	1	SHELL

C TJ-102

NOTES:
 1) EACH PART SHALL BE MARKED WITH U-92A/U & M9177/3-1
 2) PART SHALL BE ON QUALIFIED PRODUCT LIST FOR MIL-C-9177/3A
 3) CRIMPING TOOLS: USE M22520/5-01 HAND TOOL W/CRIMP DIE M22520/5-29, M22520/5-35 OR M22520/5-55
 4) MATING CONNECTORS M9177/1-1, & M9177/2-1



RECOMMENDED CABLE:
 WM-14/U (4-COND)
 FOR USE WITH U-94A/U

THIS DOCUMENT CONTAINS PROPRIETARY INFORMATION OF NEXUS, INCORPORATED AND SUCH INFORMATION MAY NOT BE DISCLOSED TO OTHERS FOR ANY PURPOSE OR USED FOR ANY PURPOSE WITHOUT THE WRITTEN CONSENT OF NEXUS.

DWN. BY		IDH	DATE		MATERIAL	
CHECKED BY			DATE		FINISH	
APPR. BY			DATE		WEIGHT	SCALE = 4.00 :1
C		CHG: TJS-102-9 TO TJ-102-9(D-8)	10/18	HR	TITLE TELEPHONE JACK	
B		ADD: BOM & EXP VIEW	220	HR		
A		SECTION A-A CONFIG CHANGED	1/26			
LET.		REVISION	CN #	DATE	CHK	DO NOT SCALE DWG.
						SHEET 1 OF 1
						SIZE C
						DWG. NO. TJ-102
						NEXUS STAMFORD, CONN

UNLESS OTHERWISE SPECIFIED
 DIMENSIONS ARE IN INCHES & OR (mm)
 TOLERANCES:
 DECIMAL:
 ±.XX[X.X] ±.XXX[X.XX] ±.000[X.XXX]
 ±.0X[0.X] ±.00X[0.0X] ±.000X[0.0XX]
 FRACTION: ±X/XX ±X/XX
 ANGLES: ±X° ±X'